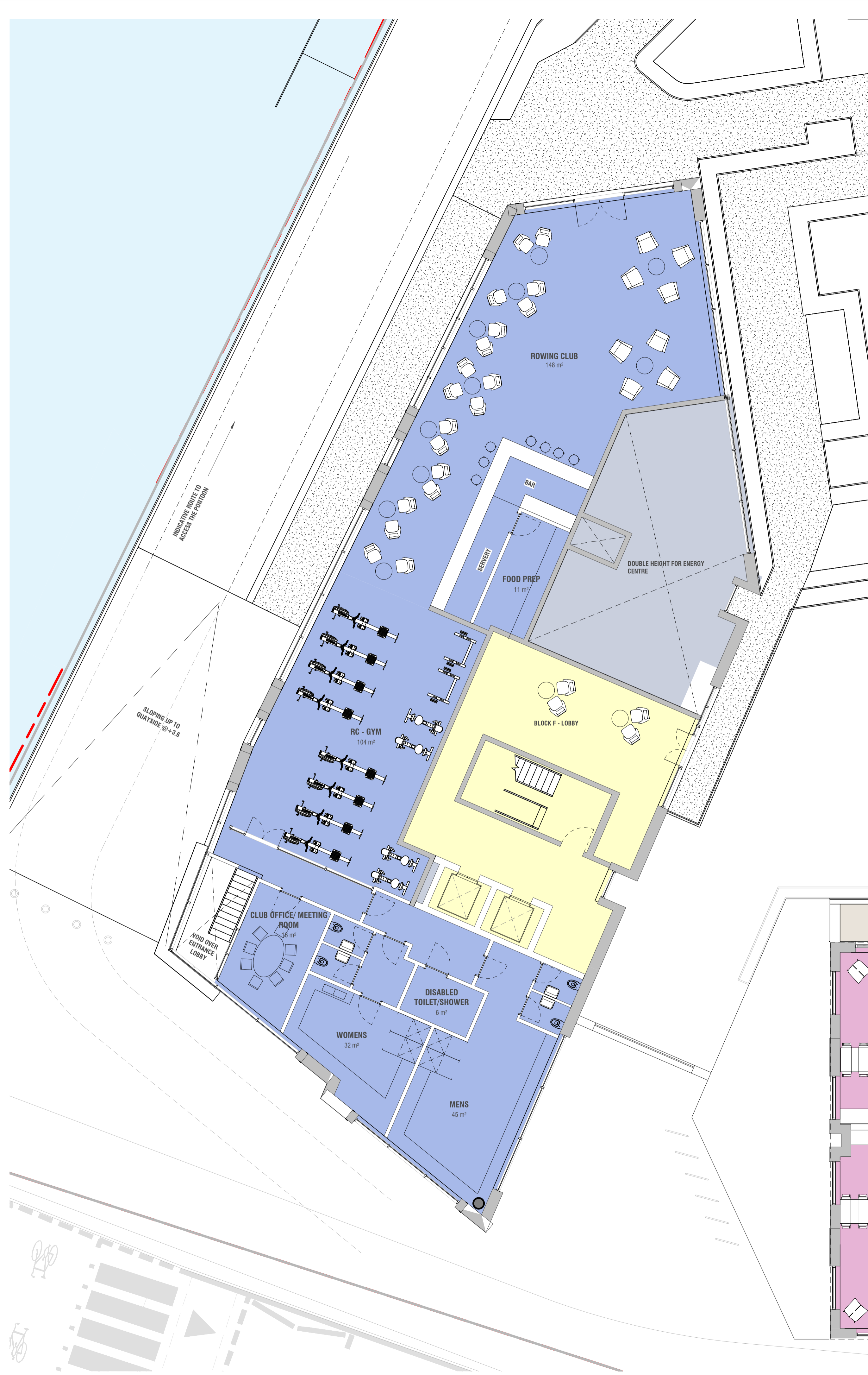


**Level 00 - Rowing Boat Club**  
1:100



**Level 01 - Rowing Boat Club**  
1 : 100

Dimensions to be verified on site.  
Use figured dimensions only. Do not work from reduced scale drawings.  
Please refer to scale and sheet size as indicated.

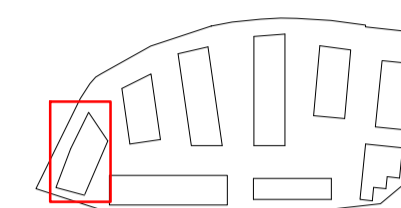
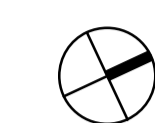
This drawing is the property of LEONARD DESIGN ARCHITECTS LTD

Copyright is reserved by them and the drawing is issued on the condition that it is not copied, reproduced, retained or disclosed to any unauthorised person without the prior consent in writing of Leonard Design Architects Ltd. All rights reserved.

**DO NOT SCALE**

## Orientation

### Key Plan



P03	04.02.22	Amendments to planning drawings issued on 26.03.21	SM A
P02	26.03.21	Amendments to planning drawings issued on 05.04.19	SS A
P01	08.07.19	Added Information for planning issued on 28.05.18	SM A

Rev. Date	Revision	By	Checked
-----------	----------	----	---------

**leonard** design architects

4th floor, Albion House  
5-13 Canal Street  
Nottingham, NG1 7EG, United Kingdom  
t. +44 (0) 115 945 0080  
e. office@leonarddesignarchitects.com

**Client**

Reuben &amp; Morgan Ltd.

## Project

West Quay Road, Poole

**Drawing Title**

### Indicative Rowing Club Plans

<b>Project Number</b> 0625	<b>Suitability</b> S4
<b>Drawn by</b> LH	<b>Checked by</b> SM
<b>Scale @A1</b> As indicated	<b>Date</b> 08.07.2019
<b>File Identifier</b>	<b>Revision</b>
0625 - LDA - ZZ - ZZ - DR - A - 08099	P03

### Purpose of Issue

## PLANNING

### Project Status

## PLANNING